

# L3HARRIS 787 Briefing Station

## Quick Start Guide

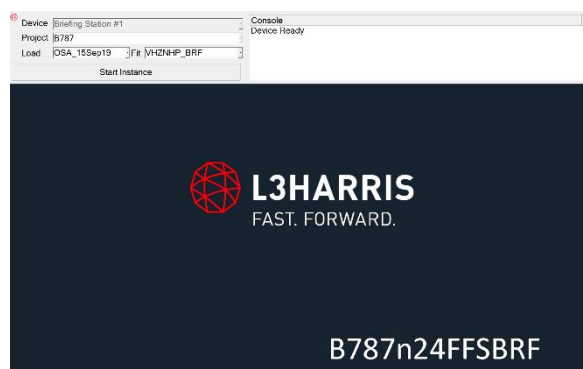


**\*\* Start This Guide at the section relevant to condition the Briefing Station is found in \*\***

- 1) Turn on briefing station computer (*Figure 1*)



- 2) “Splash” the launch program will auto start (*Figure 2*). If Splash is not running, click the icon on task bar to open Splash (*Figure 3*)



*Splash program and Start Instance*



*Launch Splash Icon*

- 3) Select correct Load (latest date) and Fit (VHZNP\_BRF)
- 4) Click on the “Start Instance button” (*Figure 2*)
- 5) Briefing program will load. Progress can be seen under “Console” **Note:**  
This may take a few minutes.
- 6) Flight Deck and the IOS panels will display
- 7) IOS and Flight Deck can be navigated using the Mouse and the Screens are also “touch screens”
- 8) Access the user guide by either pressing **F1** on keyboard or selecting the **Help** menu then **Contents** the user guide will open in an IE window.  
Click on **Allow Blocked Content**  
As a minimum read the **Hints and Tips** section
- 9) The Aircraft will be in a “de powered” state
- 10) Power up the Aircraft as per below
  - Set park Brake
  - Sim Freeze off
  - Battery Switch On
  - Wait 15 seconds after Capt Inboard and Lower EICAS screens display before proceeding
  - Select External Power on IOS and Overhead Panel or Start APU
- 11) Operate as per Simulator with the addition that if positioned on threshold aircraft will “auto takeoff” when a TOGA button is pressed. Engage an A/P airborne. Above 200’ before 2000’.

**\*\* When finished using the Briefing Station please leave the Station as you would leave the FF Simulator\*\***